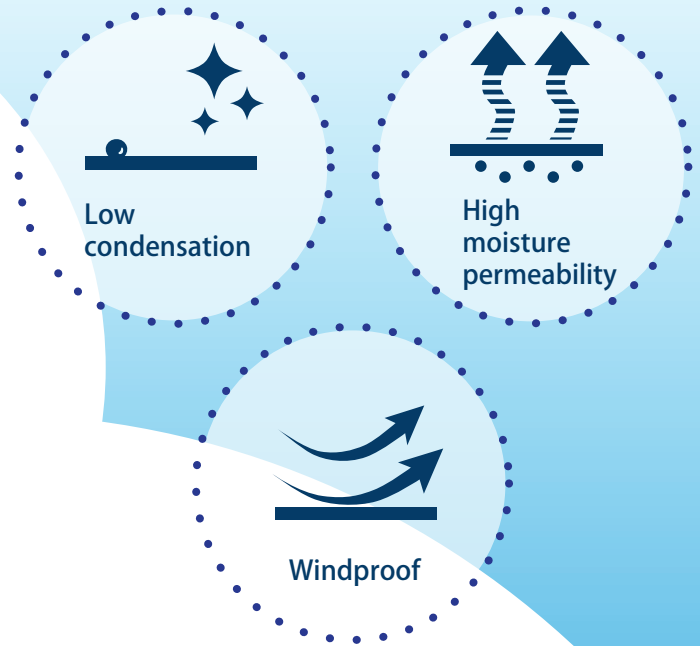
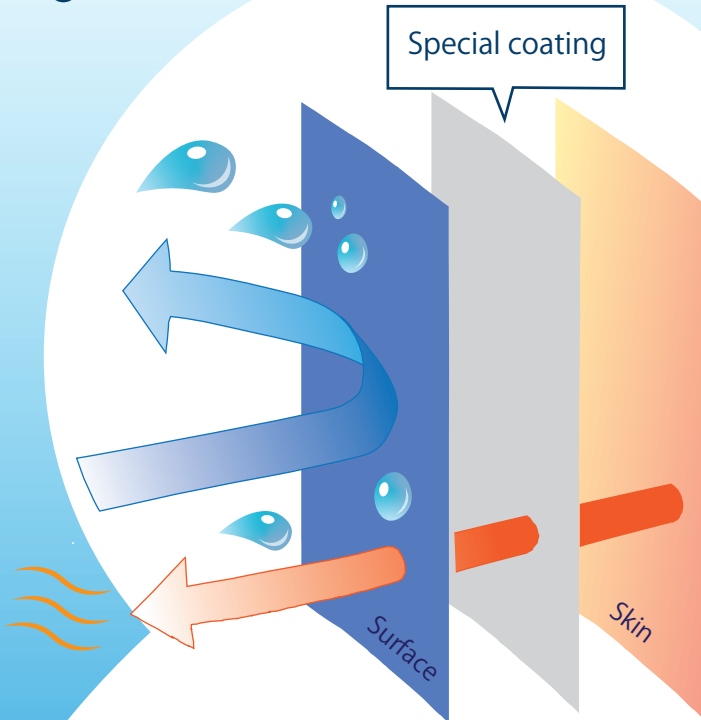


Stiffness-preventing material

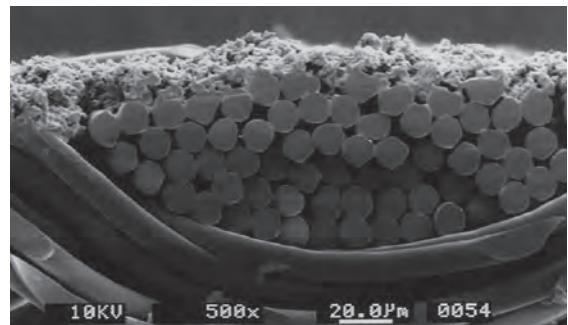
SPE SA ROYAL™

SPE SA ROYAL is a special coating material developed by Komatsu Matere for sports and casual wear. This fabric offers low condensation and high moisture permeability, providing dry comfortable conditions through the minimization of stiffness.

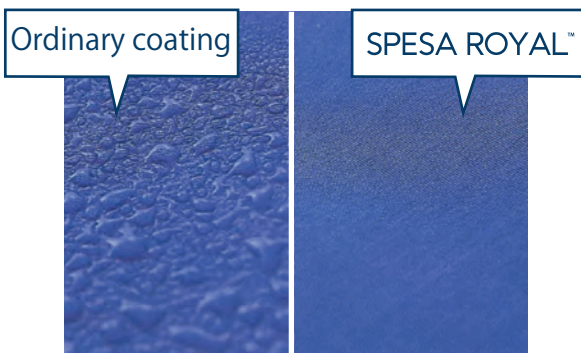
● Comfort mechanism



● Cross-section image



● Condensation comparison images *



*Test conditions Inside: 40° C warm water ,
Outside: condition confirmed
under ambient temperature of
10° C one hour later

Basic properties

Water repellency (JIS L1092 Spray method)	: Initial condition: class 4 or higher 10HL / 10DC: class 2 or higher
Water pressure resistance (JIS L1092A Low pressure method)	: 300mm~500mm/H ₂ O
Moisture permeability (JIS L1099 A-1 method)	: >8,000g/ m ² /24hrs
Condensation resistance (KMS-1-8)	: ≤5g/ m ² · h

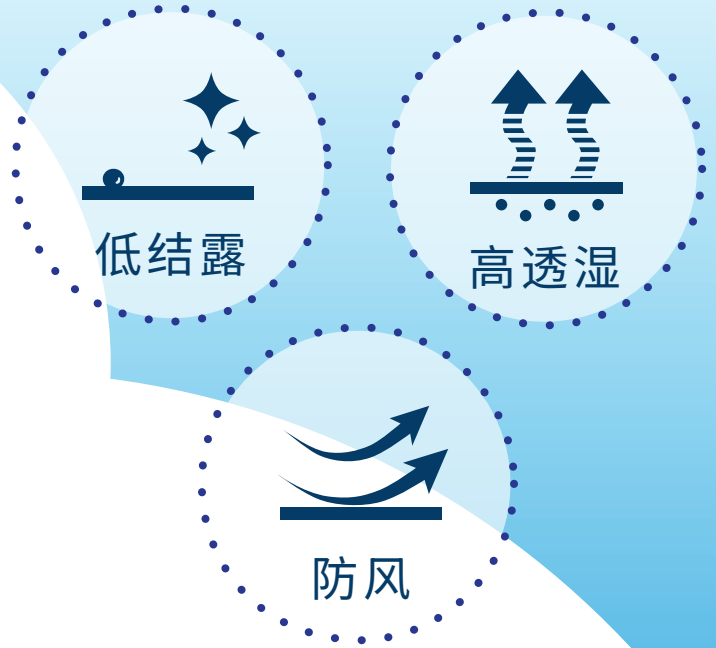
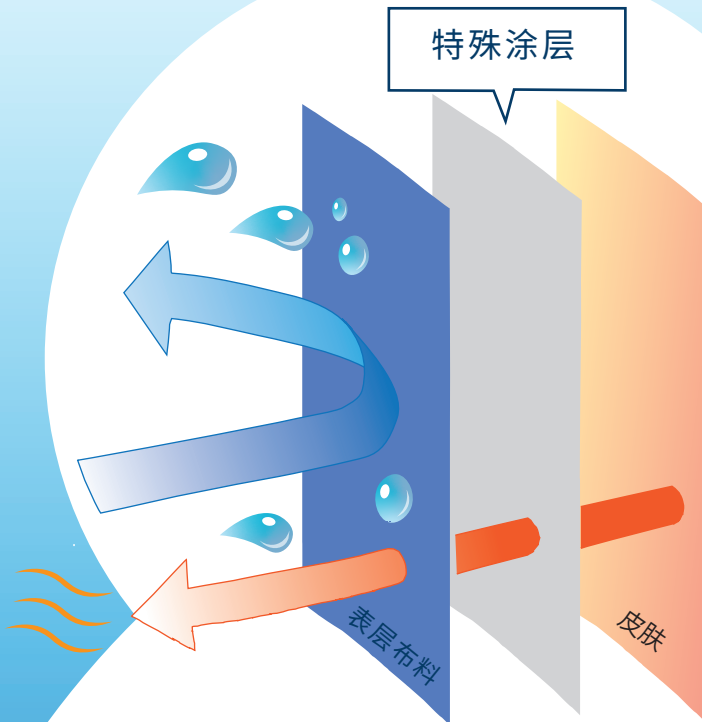


防止闷热、舒适惬意

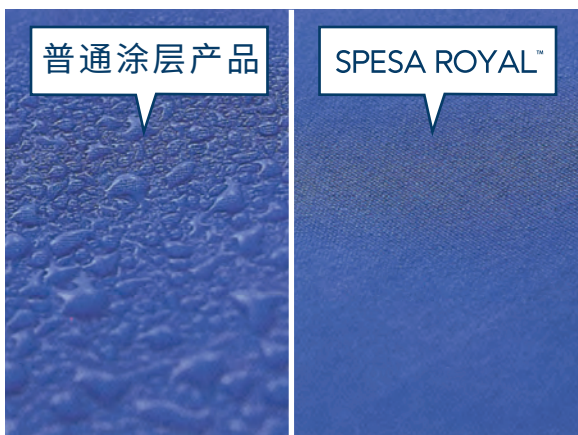
SPE SA ROYAL™

「SPE SA ROYAL」是小松美特料公司为各种运动休闲服用途而开发的特殊涂层面料。
该材料具有低结露、高透湿性的特点，降低了闷热感，制成服装后衣内环境触感干爽、让人感到舒适惬意。

● 实现舒适感的材料构造

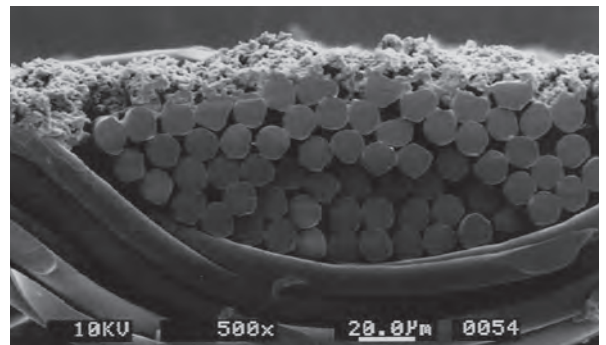


● 结露状况对比照片*



* 试验条件
确认在内侧为40℃热水、外侧为10℃环境下放置1小时后的结露状态

● 剖视图



基本性能

不沾水度	(JIS L1092 喷雾法)	: 初期 ≥ 4 级 10HL · 10DC ≥ 2 级
耐水压	(JIS L1092A 低水压法)	: 300mm~500mm/H ₂ O
透湿性	(JIS L1099 A-1 法)	: >8,000g/ m ² /24hrs
结露性	(KMS-1-8)	: ≤5g/ m ² · h

