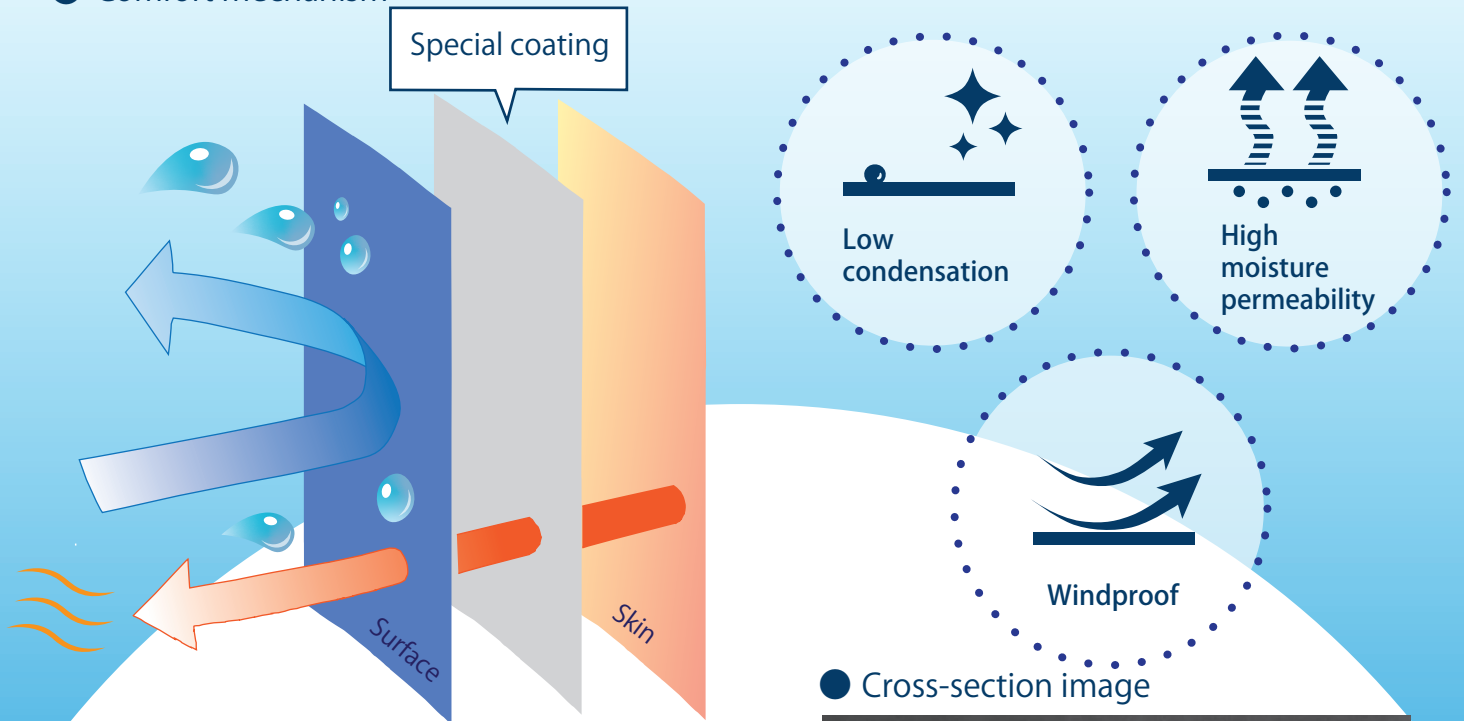


Stiffness-preventing material

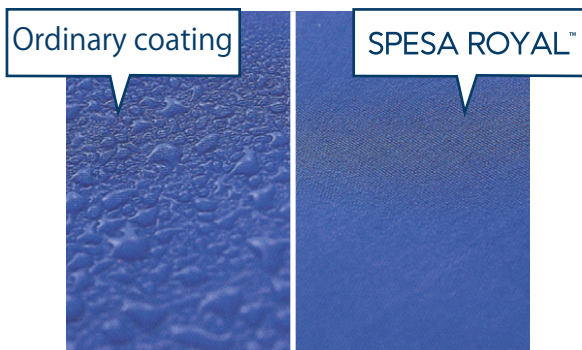
SPEESA ROYAL™

SPEESA ROYAL is a special coating material developed by Komatsu Materre for sports and casual wear. This fabric offers low condensation and high moisture permeability, providing dry comfortable conditions through the minimization of stiffness.

● Comfort mechanism

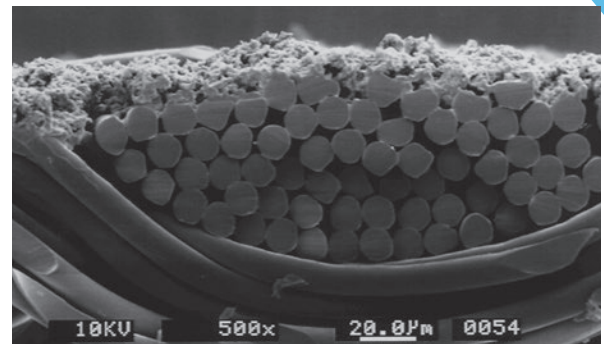


● Condensation comparison images *



*Test conditions Inside: 40° C warm water ,
Outside: condition confirmed
under ambient temperature of
10° C one hour later

● Cross-section image



Basic properties

Water repellency (JIS L1092 Spray method)	Initial condition: class 4 or higher 10HL / 10DC: class 2 or higher
Water pressure resistance (JIS L1092A Low pressure method)	300mm~500mm/H ₂ O
Moisture permeability (JIS L1099 A-1 method)	>8,000g/ m ² /24hrs
Condensation resistance (KMS-1-8)	≤5g/ m ² · h

KOMATSU MATERE Co., Ltd.

Head Office - Nu 167, Hama-machi, Nomi-city, Ishikawa, Japan TEL:+81-761-55-1111

Tokyo Sales Branch - 3-10-6 Maruito Ginza No.3 Building 4th floor, Ginza, Chuo-ward, Tokyo, Japan TEL:+81-3-3549-3880

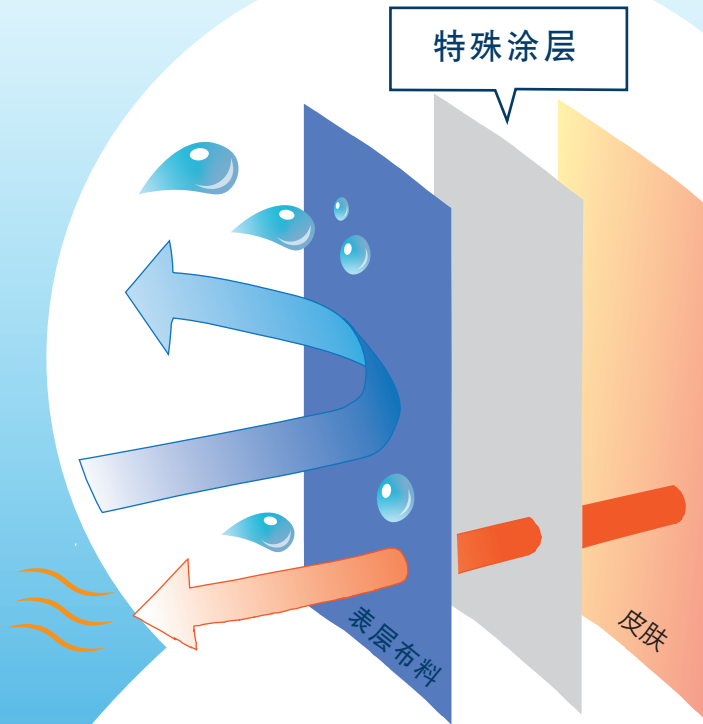
Osaka Sales Branch - 2-2-22 HERBIS ENT Office Tower 8th floor, Umeda, Kita-ward Osaka-city, Osaka, Japan TEL:+81-6-6344-4161

防止闷热、舒适惬意

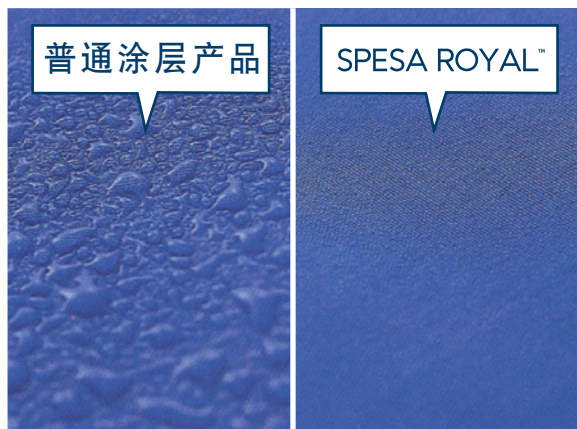
SPEESA ROYAL™

「SPEESA ROYAL」是小松美特料公司为各种运动休闲服用途而开发的特殊涂层面料。
该材料具有低结露、高透湿性的特点，降低了闷热感，制成服装后衣内环境触感干爽、让人感到舒适惬意。

● 实现舒适感的材料构造

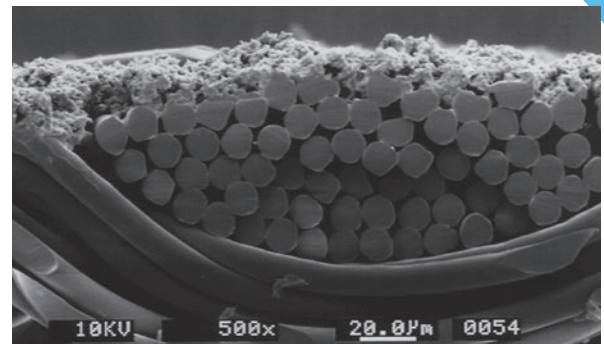


● 结露状况对比照片*



* 试验条件
确认在内侧为40℃热水、外侧为10℃环境下放置1小时后的结露状态

● 剖视图



基本性能

不沾水度	(JIS L1092 喷雾法)	: 初期 ≥ 4级 10HL · 10DC ≥ 2级
耐水压	(JIS L1092A 低水压法)	: 300mm~500mm/H ₂ O
透湿性	(JIS L1099 A-1 法)	: >8,000g/ m ² /24hrs
结露性	(KMS-1-8)	: ≤5g/ m ² · h

KOMATSU MATERE Co., Ltd.

总公司 - 石川县能美市浜町NU167番地 TEL: +81-761-55-1111

东京营业所 - 东京都中央区银座3丁目10番6号MARUITO 银座3号大厦 4楼 TEL: +81-3-3549-3880

大阪营业所 - 大阪府大阪市北区梅田2丁目2番22号HERBIS ENT 办公楼8楼 TEL: +81-6-6344-4161

上海代表处 - 中华人民共和国上海市延安西路2201号 上海国际贸易中心 1913室 TEL: +86-21-6275-4558

