

# Honey Vintage™

Elegant and dressy natural fabric with bulging feeling that brings out the original characteristics of the yarn with innovative processing technology

By controlling the shrinkage balance of the thread in three dimensions in the length direction, width direction, and thickness direction by the originally developed "3D dyeing", the original properties of the thread are exhibited. It is a fabric that emphasizes the feeling of swelling and has a warm texture like "sunlight", a dressy texture and drape, and is characterized by a sweet and gentle touch.



KOMATSU MATERE Co., Ltd.

Head Office - Nu 167, Hama-machi, Nomi-city, Ishikawa, Japan TEL:+81-761-55-1111

Tokyo Sales Branch - 3-10-6 Maruito Ginza No.3 Building 4th floor, Ginza, Chuo-ward, Tokyo, Japan TEL:+81-3-3549-3880

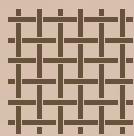
Osaka Sales Branch - 2-2-22 HERBIS ENT Office Tower 8th floor, Umeda, Kita-ward Osaka-city, Osaka, Japan TEL:+81-6-6344-4161



# Honey Vintage™

利用高水平加工技术引导出丝线原有特色的雅致华丽、有膨胀感的自然面料

通过利用独立开发的“3D染色”，在长度、宽度和厚度方向的三个维度上控制丝线使其收缩平衡，发挥出丝线原有的性质。这是一种注重膨胀感、有“向阳处”般温暖的质感、华丽的外观和贴身滑落感、摸起来感觉甜美温柔的织物。



纺织品



编织品



膨胀感

KOMATSU MATERE Co., Ltd.

总公司 - 石川县能美市浜町NU167番地 TEL: +81-761-55-1111

东京营业所 - 东京都中央区银座3丁目10番6号MARUITO 银座3号大厦 4楼 TEL: +81-3-3549-3880

大阪营业所 - 大阪府大阪市北区梅田2丁目2番22号HERBIS ENT 办公楼8楼 TEL: +81-6-6344-4161

上海代表处 - 中华人民共和国上海市延安西路2201号 上海国际贸易中心 1913室 TEL: +86-21-6275-4558

