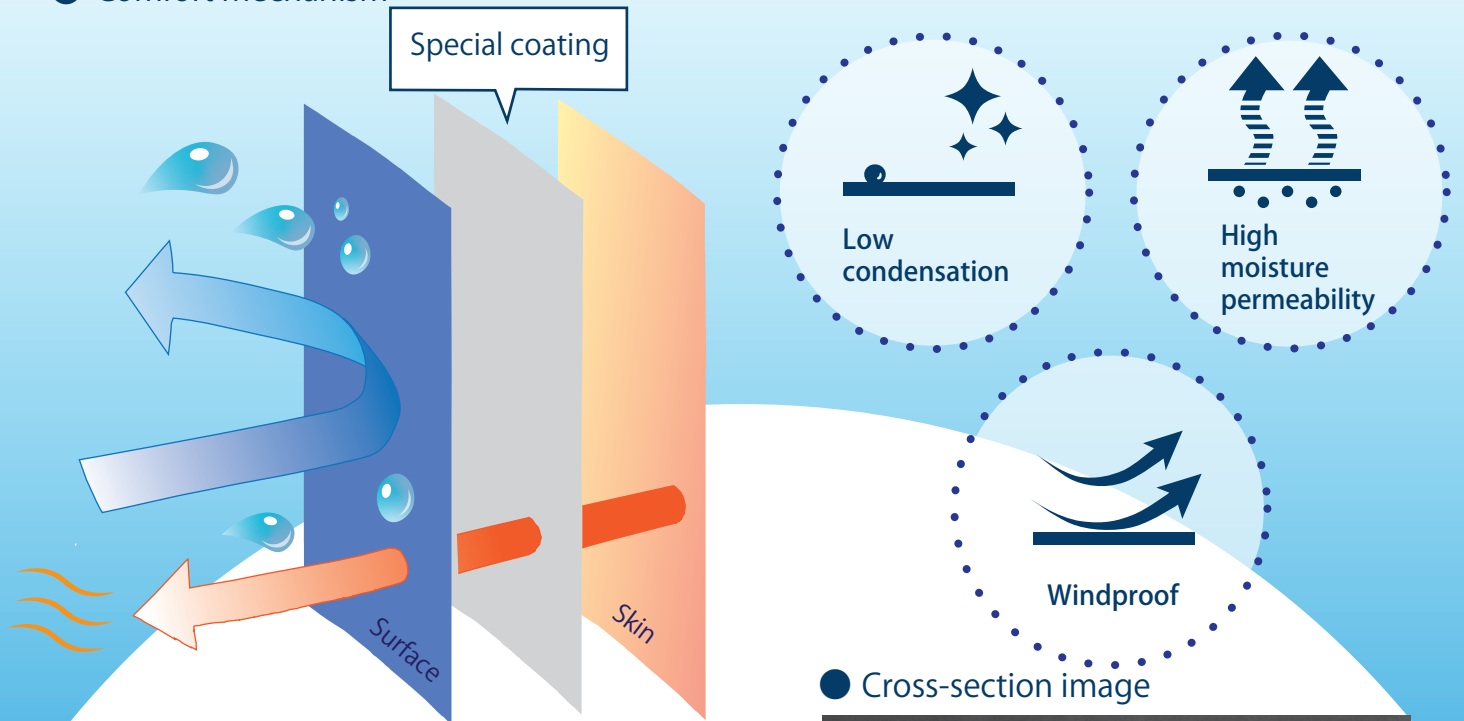


# Stiffness-preventing material

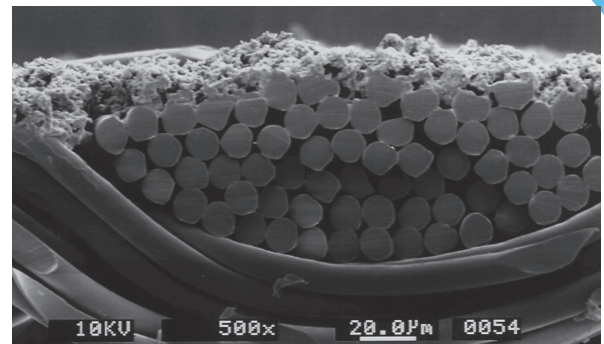
# SPEESA ROYAL®

SPEESA ROYAL is a special coating material developed by Komatsu Materre for sports and casual wear. This fabric offers low condensation and high moisture permeability, providing dry comfortable conditions through the minimization of stiffness.

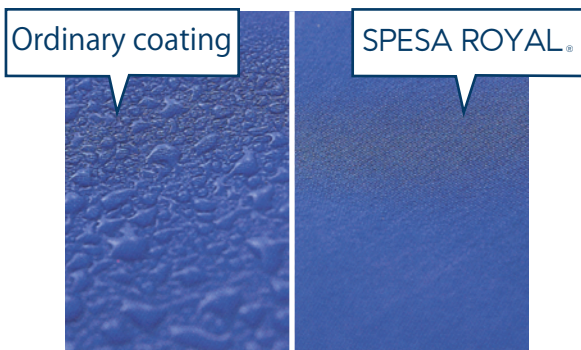
## ● Comfort mechanism



## ● Cross-section image



## ● Condensation comparison images \*



\*Test conditions Inside: 40° C warm water ,  
Outside: condition confirmed  
under ambient temperature of  
10° C one hour later

## Basic properties

|  |  |
|--|--|
| Water repellency (JIS L1092 Spray method)                  | Initial condition: class 4 or higher<br>10HL / 10DC: class 2 or higher |
| Water pressure resistance (JIS L1092A Low pressure method) | 300mm~500mm/H <sub>2</sub> O   |
| Moisture permeability (JIS L1099 A-1 method)               | >8,000g/ m <sup>2</sup> /24hrs   |
| Condensation resistance (KMS-1-8)                          | ≤5g/ m <sup>2</sup> · h  |

**KOMATSU MATERE Co., Ltd.**

Head Office - Nu 167, Hama-machi, Nomi-city, Ishikawa, Japan TEL:+81-761-55-1111

Tokyo Sales Branch - 3-10-6 Maruito Ginza No.3 Building 4th floor, Ginza, Chuo-ward, Tokyo, Japan TEL:+81-3-3549-3880

Osaka Sales Branch - 2-2-22 HERBIS ENT Office Tower 8th floor, Umeda, Kita-ward Osaka-city, Osaka, Japan TEL:+81-6-6344-4161



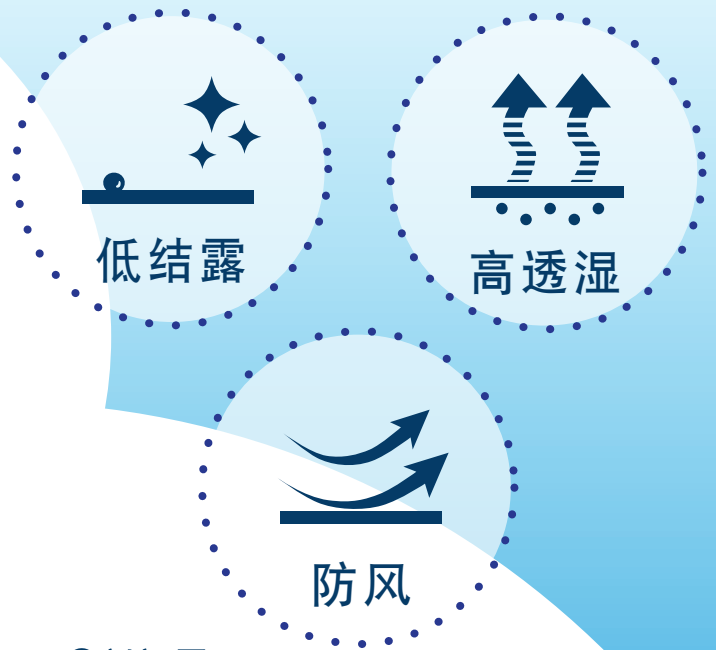
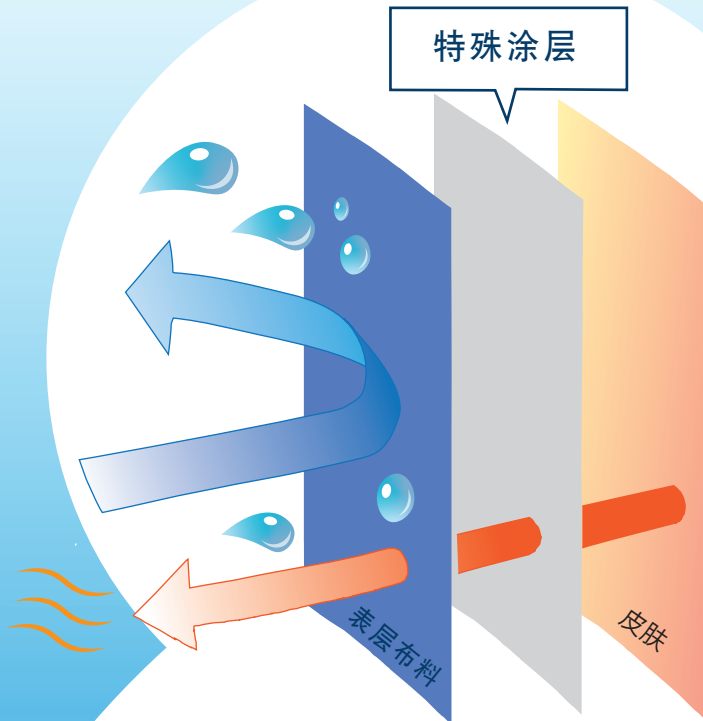
防止闷热、舒适惬意

# SPEESA ROYAL®

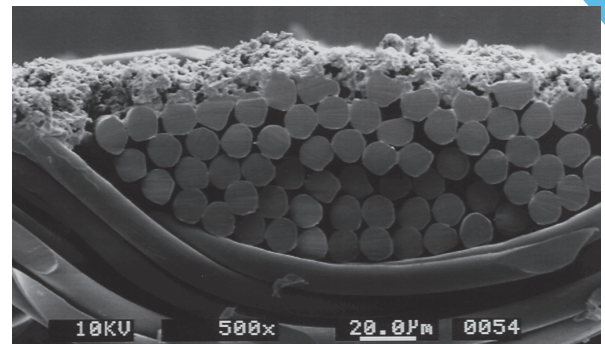
スピーサロイヤル

「SPEESA ROYAL®」是小松美特料公司为各种运动休闲服用途而开发的特殊涂层面料。  
该材料具有低结露、高透湿性的特点，降低了闷热感，制成服装后衣内环境触感干爽、让人感到舒适惬意。

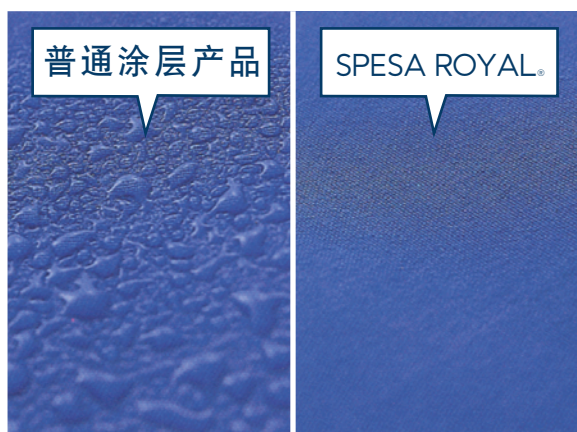
## ●实现舒适感的材料构造



## ●剖视图



## ●结露状况对比照片\*



\* 试验条件  
确认在内侧为40℃热水、外侧为10℃环境下放置1小时后的结露状态

## 基本性能

|      |                   |                                  |
|------|-------------------|----------------------------------|
| 不沾水度 | (JIS L1092 喷雾法)   | : 初期 ≥ 4级<br>10HL·10DC ≥ 2级      |
| 耐水压  | (JIS L1092A 低水压法) | : 300mm~500mm/H <sub>2</sub> O   |
| 透湿性  | (JIS L1099 A-1 法) | : >8,000g/ m <sup>2</sup> /24hrs |
| 结露性  | (KMS-1-8)         | : ≤5g/ m <sup>2</sup> · h        |

KOMATSU MATERE Co., Ltd.

总公司 - 石川县能美市浜町NU167番地 TEL: +81-761-55-1111

东京营业所 - 东京都中央区银座3丁目10番6号MARUITO 银座3号大厦 4楼 TEL: +81-3-3549-3880

大阪营业所 - 大阪府大阪市北区梅田2丁目2番22号HERBIS ENT 办公楼8楼 TEL: +81-6-6344-4161

上海代表处 - 中华人民共和国上海市延安西路2201号 上海国际贸易中心 1913室 TEL: +86-21-6275-4558

