

# BIOSEIM™

## Human-friendly fabric to support skin

This fabric contains a phospholipid polymer, which has a structure similar to phospholipid, a component of human cell membrane. Fabric covered with phospholipid polymer has moisture-retaining and hypoallergenic properties, making it a skin-friendly material.

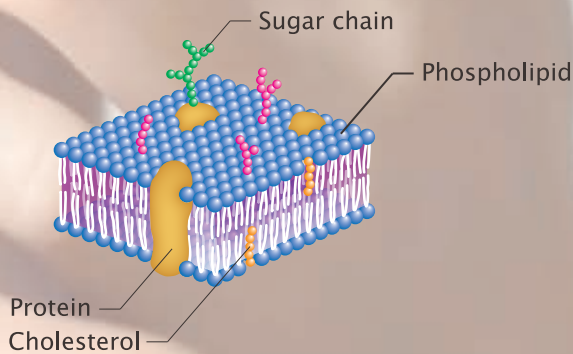
### What is phospholipid polymer?

Since phospholipid polymer contains a phospholipid component, which is similar to that of cell membrane, it exhibits biological compatibility, which improves moisture-retention and skin protection. Thus it has been used for cosmetics, hair treatment products, contact lens cleaning liquid, etc.

Envelops your skin gently via excellent moisture retention.

A wide range of applications due to antistatic and stain release properties.

#### Cell membrane structure



Skin-friendly



Moisture retention



Water absorption



Dimensional stability



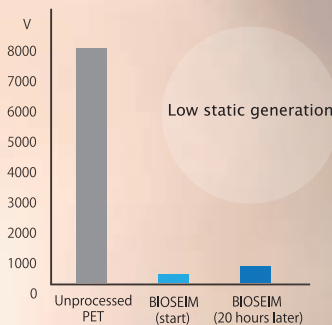
Antistatic property



Stain release (SR)

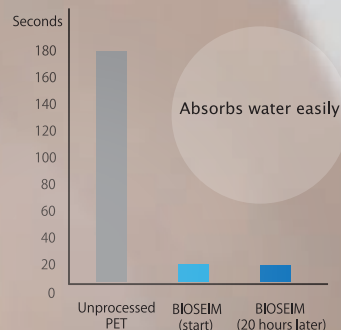
#### Friction-charged electrostatic potential (JIS L1094)

\*The graph shows reference values measured from representative products



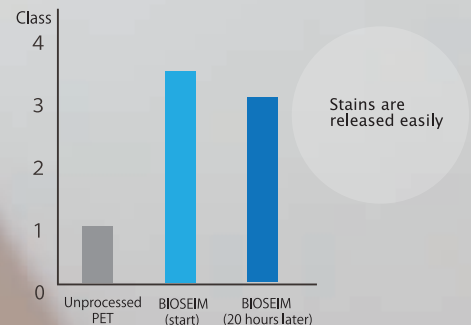
#### Water absorption (JIS L1907)

\*The graph shows reference values measured from representative products



#### Dirt release property (Diamond paste application method)

\*The graph shows reference values measured from representative products



KOMATSU MATERE Co., Ltd.

Head Office - Nu 167, Hama-machi, Nomi-city, Ishikawa, Japan TEL: +81-761-55-1111

Tokyo Sales Branch - 3-10-6 Maruito Ginza No.3 Building 4th floor, Ginza, Chuo-ward, Tokyo, Japan TEL: +81-3-3549-3880

Osaka Sales Branch - 2-2-22 HERBIS ENT Office Tower 8th floor, Umeda, Kita-ward Osaka-city, Osaka, Japan TEL: +81-6-6344-4161

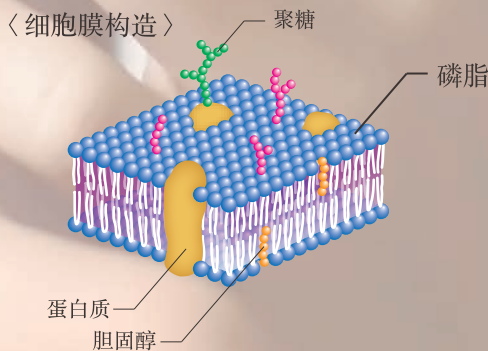
# BIOSEIM™

## 温和地支持肌肤，呵护人体的面料

配制有一种磷脂聚合物，这种聚合物的构造与构成人体等生物体细胞膜的磷脂部分相似，具有保湿型和低刺激性。BIOSEIM™就是采用这种磷脂聚合物的膜层来覆盖着纤维、保护肌肤的材料。

### 磷脂聚合物是什么？

它具有与细胞膜类似的磷脂部分，因此有“生物相容性”的特征，可以增强保湿性和皮肤的保护性。目前已实际应用于化妆品、护发产品和隐形眼镜护理产品等。



● 具有出色的保湿性，温和地包裹着肌肤。

● 防静电性、去污性能优越，可广泛应用于各种领域。



保护肌肤



保湿



吸水



尺寸稳定性



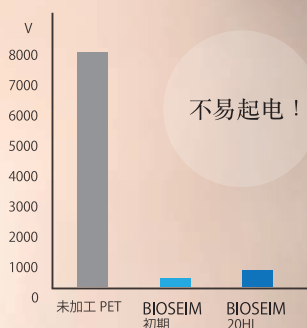
防静电



SR (去污)

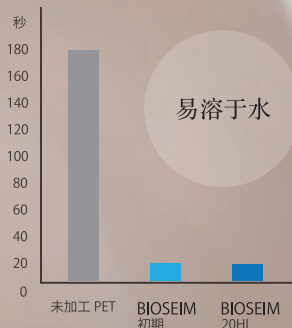
### ■ 摩擦起电电压 (JIS L1094)

※图表数据是来自代表产品编号的参考值



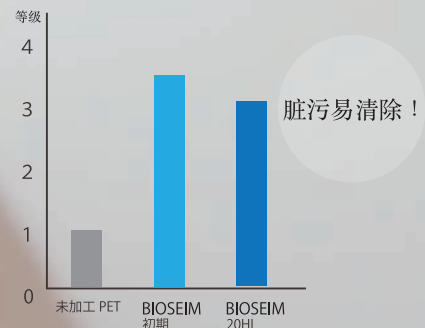
### ■ 吸水性 (JIS L1907)

※图表数据是来自代表产品编号的参考值



### ■ 去污性 (diamond paste 方法)

※图表数据是来自代表产品编号的参考值



KOMATSU MATERE Co., Ltd.

总公司 - 石川县能美市浜町NU167番地 TEL: +81-761-55-1111

东京营业所 - 东京都中央区银座3丁目10番6号MARUITO 银座3号大厦 4楼 TEL: +81-3-3549-3880

大阪营业所 - 大阪府大阪市北区梅田2丁目2番22号HERBIS ENT 办公楼8楼 TEL: +81-6-6344-4161

上海代表处 - 中华人民共和国上海市延安西路2201号 上海国际贸易中心 1913室 TEL: +86-21-6275-4558

