



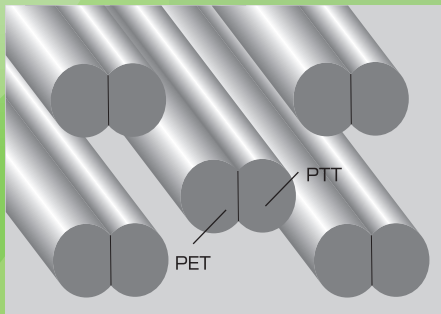
Toray Synthetic  
Textile Cluster

Art in Technology  
**komatsumateRe**

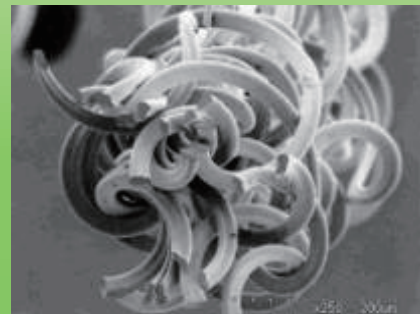
Eco-friendly stretch fabric

# VIRTUAREX™

VIRTUAREX™ is an environment-friendly material made from PTT conjugated fiber; "T400 Fiber" which is partly made from bio based material



cross section image of T400 fiber



highly conjugated parts

- Eco-friendly fabric centered around the PTT conjugated "T400 fiber" material, combined with finishing such as solvent free WR.
- Higher kick back compared to conventional stretch fabrics of processed polyester yarn
- Low shrinkage from washing/drying and has good dimensional stability
- Can be finished with techniques which will bring out various face appearances such as alkali treatment which is not compatible with polyurethane

T400 fiber is a trademark of Invista  
VIRTUAREX is a stretch fabric which was developed  
for Toray Synthetic Textile Cluster

**KOMATSU MATERE Co., Ltd.**

Head Office - Nu 167, Hama-machi, Nomi-city, Ishikawa, Japan TEL: +81-761-55-1111

Tokyo Sales Branch - 3-10-6 Maruito Ginza No.3 Building 4th floor, Ginza, Chuo-ward, Tokyo, Japan TEL: +81-3-3549-3880

Osaka Sales Branch - 2-2-22 HERBIS ENT Office Tower 8th floor, Umeda, Kita-ward Osaka-city, Osaka, Japan TEL: +81-6-6344-4161



WEBSITE

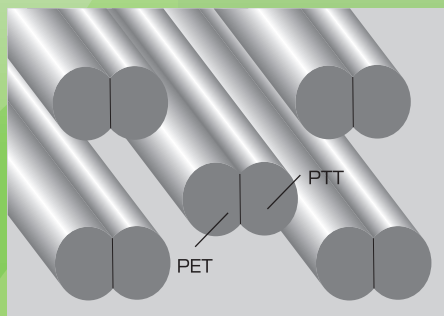


Toray Synthetic  
Textile Cluster

## 环保型弹力材料

# VIRTUAREX™

VIRTUAREX™ 是一种部分原料使用了“T400™ 纤维”的材料。  
这种纤维是源自植物的环保型 PTT 复合纤维。



T400™ 纤维截面图（示意图）



显现出高度卷缩

- VIRTUAREX™ 是一种以 PTT 复合纤维“T400™ 纤维”为中心材料、经过防水加工等环保型加工而制成的纺织原料。在这些加工中不使用任何有机溶剂。
- 与使用传统聚酯加工线的弹力纤维相比，VIRTUAREX™ 的拉伸恢复性能更好。
- VIRTUAREX™ 具有良好的尺寸稳定性，洗涤和干燥引起的布料收缩较小。
- 通过采用减量加工等特殊加工工艺（这些工艺在聚氨酯纤维上无法实施），VIRTUAREX™ 将能发挥其优秀的设计性能，展现更加丰富的面料外观。

T400™ 纤维：INVISTA 公司的商标。  
VIRTUAREX™：“东丽合纤 CLUSTER (TORAY SYNTHETIC TEXTILE CLUSTER)”  
开发的弹力材料。

KOMATSU MATERE Co., Ltd.

总 公 司 - 石川县能美市浜町NU167番地 TEL: +81-761-55-1111  
东京营业所 - 东京都中央区银座3丁目10番6号MARUITO 银座3号大厦 4楼 TEL: +81-3-3549-3880  
大阪营业所 - 大阪府大阪市北区梅田2丁目2番22号HERBIS ENT 办公楼8楼 TEL: +81-6-6344-4161  
上海代表处 - 中华人民共和国上海市延安西路2201号 上海国际贸易中心 1913室 TEL: +86-21-6275-4558



WEBSITE