

KOMAWAY™ Vent Filter



- Allows for ventilation and internal pressure control.
- Porous film prevents penetration by water, dust and oil.
- Waterproofing and moisture permeability prevents condensation inside housings.
- Film surface is water and oil repellent.
- High durability due to durable PET mesh.

Usage Examples



- LED lights • Outdoor security cameras
- Electric bicycle controller components
- Outdoor electrical switchboards • Inner pressure control film
- Outdoor condensation prevention filters
- Vehicle pressure control film • Tall building elevator pressure control film

Specifications

Product No.	Ventilation rate (Gurley method)	Water pressure resistance (mm)	Waterproof	Other features
TX1303M270	12 sec	7,500	Equivalent to IPX7 and 8	Compatible with RoHS and REACH standards

*The above are measured values; not guaranteed values.

*The waterproof specification refers to the housing.

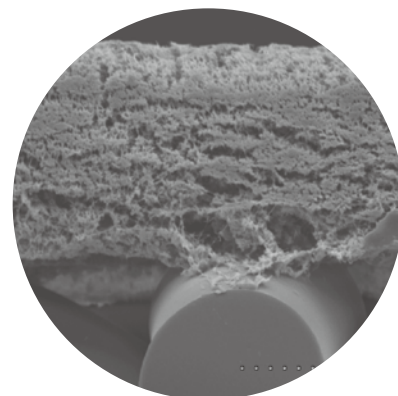
*Water pressure resistance measured using the JIS L1092 Water Penetration Test B (High water pressure method)

*Ventilation rate measured using the JIS L1092-B method (Gurley method)

Configuration Drawing



Sectional View (electron microscope image)



KOMATSU MATERE Co., Ltd.

Tokyo Sales Branch - 3-10-6 Maruito Ginza No.3 Building 4th floor, Ginza, Chuo-ward, Tokyo, Japan TEL: +81-3-3549-3880

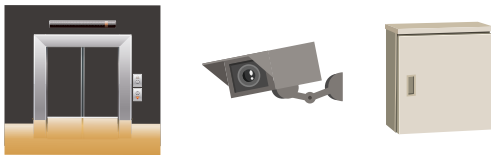


KOMAWAY™ Vent Filter



- 具有透气性，可进行内压调节。
- 为多孔质膜片，可防止水、粉尘、油从外部侵入。
- 有防水·渗潮性，因此可防止箱体内部结露。
- 有不沾水·不沾油性（膜片表面）。
- 加强材料使用了PET网状物，因此耐用性好。

■用途示例



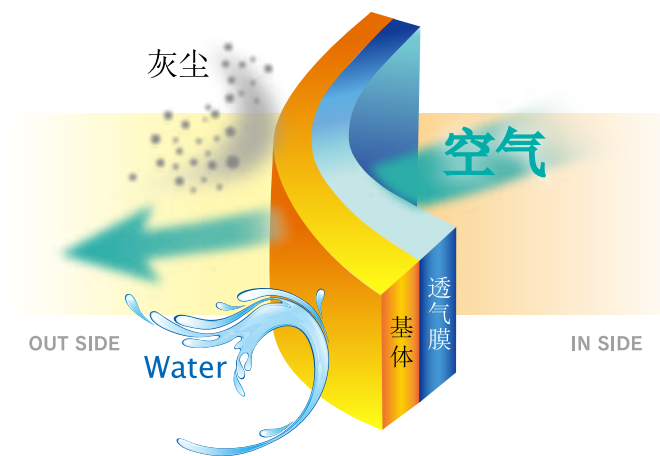
- LED照明 · 户外监控摄像机
- 电动自行车等的控制部件
- 户外安装配电箱 · 作为内压力调节膜
- 作为户外使用的防结露过滤器
- 车辆的压力调节膜 · 高层电梯的压力调节膜

■一览表

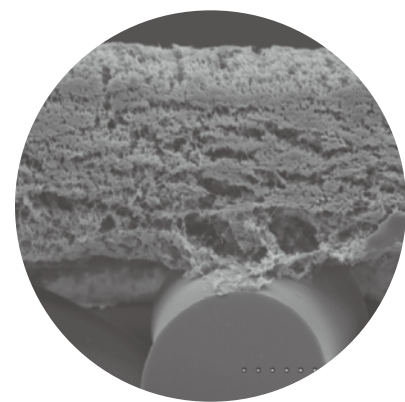
产品编码	透气度 (gurley法)	耐水压 (mm)	防水性	其他
TX1303M270	12 sec	7,500	相当于IPX7, 8规格	RoHS、REACH适用产品

※本记载数据为测量值，而非标准保证值。
 ※防水性：为箱体的防水性。
 ※耐水压：按JIS L 1092耐水度试验B法（高水压法）进行测量。
 ※透气度：按JIS L1092 B法（gurley法）进行测量。

■结构图



■截面图（电子显微镜图像）



KOMATSU MATERE Co., Ltd.

东京营业所 - 东京都中央区银座3丁目10番6号MARUITO 银座3号大厦 4楼 TEL: +81-3-3549-3880
 上海代表处 - 中华人民共和国上海市延安西路2201号 上海国际贸易中心 1913室 TEL: +86-21-6275-4558

