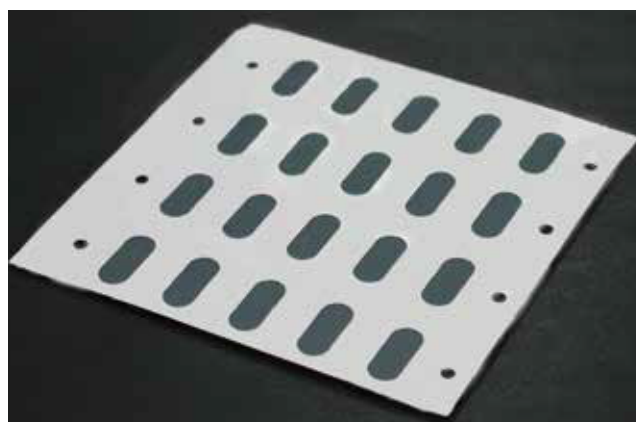


# KOMAWAY™

## Sound-Passing Waterproof Film



- Suitable for microphones and speakers that require sound permeability and waterproofing
- Prevents penetration by water and dust
- Has high durability due to durable PET mesh.

### Usage Examples



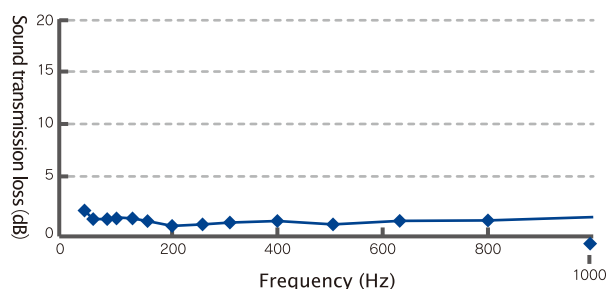
- Smart phones • Tablets • Mobile PCs
- Digital cameras • Outdoor speakers
- Other outdoor electronic components

### Specifications

Product No.	Ventilation rate (Gurley method)	Water pressure resistance (mm)	Waterproof	Other features
TX1303M270	12 sec	7,500	Equivalent to IPX7 and 8	Compatible with RoHS and REACH standards

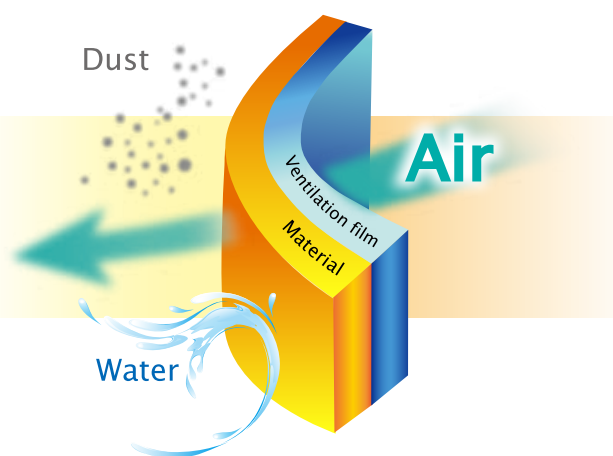
\*The above are measured values; not guaranteed values.  
 \*The waterproof specification refers to the housing.  
 \*Water pressure resistance measured using the JIS L1092 Water Penetration Test B (High water pressure method)  
 \*Ventilation rate measured using the JIS L1092-B method (Gurley method)

### Acoustic Properties (sound transmission loss)

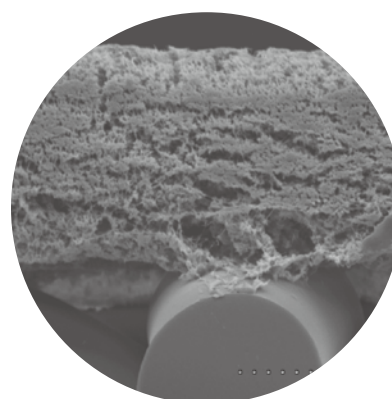


\*The sound insulation property is measured by the sound transmission loss (acoustic tube measuring method ASTM E2611-09).  
 \*The lower the sound transmission loss, the higher the sound-passing function.

### Configuration Drawing



### Sectional View (electron microscope image)



KOMATSU MATERE Co., Ltd.

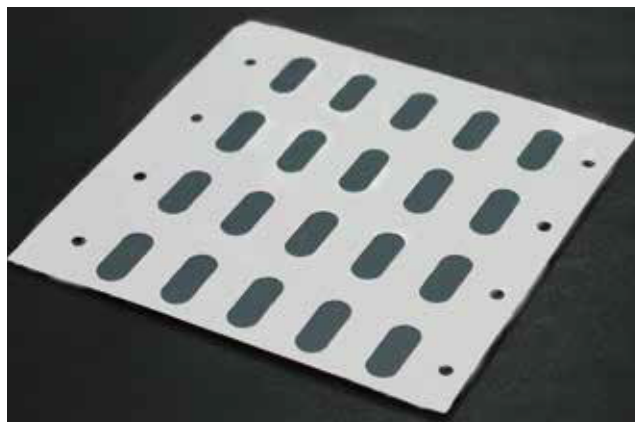
Tokyo Sales Branch - 3-10-6 Maruito Ginza No.3 Building 4th floor, Ginza, Chuo-ward, Tokyo, Japan TEL: +81-3-3549-3880



WEBSITE

# KOMAWAY™

声音传输·防水膜



- 有透气·防水性，因此它适用于需具备声音传输性及防水性的麦克风、扬声器部件。
- 可防止水、粉尘从外部侵入。
- 加强材料使用了PET网状物，因此耐用性好。

## ■ 用途示例



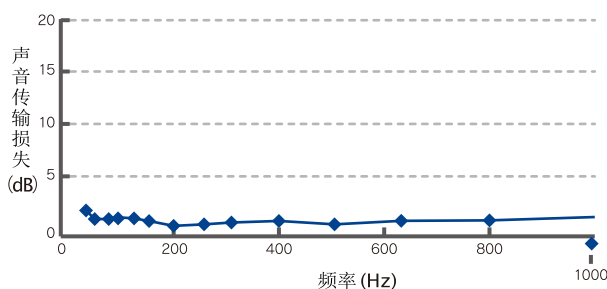
- 智能手机 · 平板 · 移动式PC机
- 数码相机 · 户外扬声器
- 其他户外使用的电子设备

## ■ 一览表

TX1303M270	12 sec	7,500	相当于 IPX7,8规格	RoHS、 REACH适用产品
------------	--------	-------	-----------------	--------------------

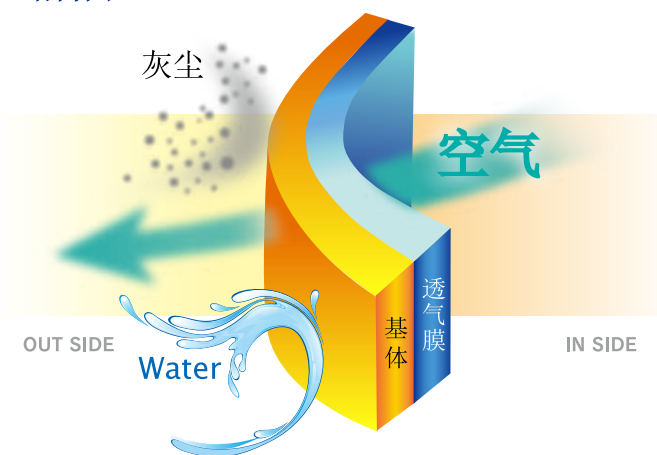
※本记载数据为测量值，而非标准保证值。  
 ※防水性：为箱体的防水性。  
 ※耐水压：按JIS L 1092耐水度试验B法（高压法）进行测量。  
 ※透气度：按JIS L1092 B法（gurley法）进行测量。

## ■ 声音特性（声音传输损失）

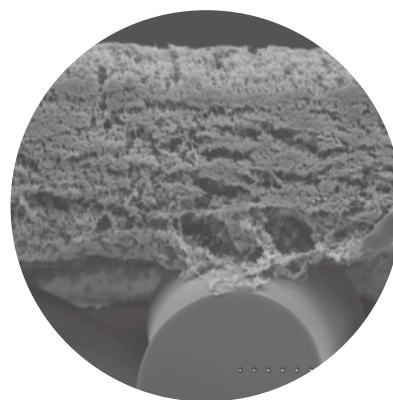


※按声音传输损失（声音阻抗管法ASTM E2611-09）进行隔音性能评定。  
 ※可以认为声音传输损失的数值越低，声音传输性能就越高。

## ■ 结构图



## ■ 截面图（电子显微镜图像）



KOMATSU MATERE Co., Ltd.

东京营业所 - 东京都中央区银座3丁目10番6号MARUITO 银座3号大厦 4楼 TEL: +81-3-3549-3880

上海代表处 - 中华人民共和国上海市延安西路2201号 上海国际贸易中心 1913室 TEL: +86-21-6275-4558



WEBSITE