

GAMEOBYE®



GAME DYE®

What is “GAME DYE”?

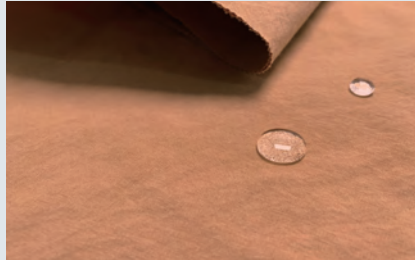
GAME DYE is a garment dyeing method using dye technology cultivated by our company over many years, and an in-house designed high-pressure dyeing machine called Senryo Yakusha. In addition to its unique texture and vintage feel, which cannot be obtained through ordinary raw fabric dyeing, GAME DYE also allows for further product development through various post-processing methods.

01 / Our original GAME DYE fabrics

We offer our own original garment dye fabrics with excellent post-dyeing shrinkage control. We also offer fabrics that have undergone our special processing methods (TECHNO VINTAGE BJ, KONBU-N, DIMA ALORA, etc.).



TECHNO VINTAGE BJ



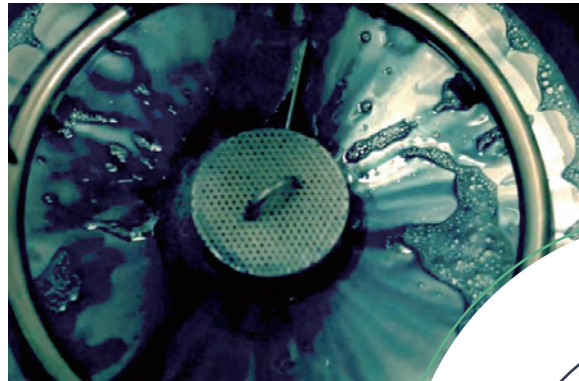
KONBU-N



DIMA ALORA

02 / The GAME DYE process

We process undyed products provided by clients, according to their desired colors, textures and functions, and return them once complete.



03

Fashionable finishing

It's possible to produce various expressions at the same time as dyeing.
 Unipue textures which can only be obtained with garment dyeing can also be produced



Regular
 (Including polyester, nylon and natural fibers)



Shibori
 (Tye dyeing)



Onibegie
 (Dyeing using natural ingredients)



Kasane
 (Multilayer dyeing)



Surf Vintage
 (Uneven dyeing)



Digo Vintage
 (Indigo dyeing)



Konbu
 (High coloring and high hardness)



WG Konbu
 (WG + high coloring and high hardness)



Product Washing

04

GAME DYE functionality

Almost all finishing available for piece dye can be offered
 *Excluding gloss coating and laminating



DANTOTSU
 water repellency



Water
 repellency



Oil
 repellency



Antibacterial
 deodorizing



Perspiration
 absorbency



Water
 absorbency



Antistatic



Stain
 release

In addition to regular product dyeing, we are also strengthening our sustainable business development through the development of recoloring (re-dyeing).

1. SDGs targets which GAME DYE contribute to

| SDGs | Example initiative | Main activities |
|--|--|--|
|  | <p>Leading the industry with continuous advanced technology development</p> <p>GAME DYE is tackling the reduction of environmental load through sustainable resource use and production.</p> | <p>Onibegie: Dyeing using natural components Use of eco-friendly materials containing ingredients extracted from discarded onion skin and unneeded plant materials.</p> <p>DANTOTSU water repellency: Super-durable water repellency processing Water repellency is maintained even after 100 home washes. The water repellency function is resistant to the hard wear and tear of daily use, extending the life of the product.</p> |
|  | <p>Creation of quality assurance systems and manufacturing control systems Contribution to the creation of a recycling society</p> <p>As a manufacturer that uses a large amount of resources, we recognize our duty to contribute to the sustainable use of materials: we promote the reduction of input resources, product recycling, and the increase of recycled resource use in our products.</p> | <p>Product re-dyeing: Reuse of GAME DYE products By re-dyeing customers' favorite products, we can extend their lifespan. It's a beneficial process for both clients and the environment.</p> <p>Onibegie: Dyeing using natural components Use of eco-friendly materials containing ingredients extracted from discarded onion skin and unneeded plant materials.</p> |
|   | <p>Contribution to the creation of a clean energy society CO₂ reduction initiatives</p> <p>We promote the creation and utilization of clean energy while also reducing the amount of energy used, aiming to realize a society where people can live comfortably.</p> | <p>Production using the Dye Star small multi-use dyeing machine On-demand production is made possible by using small dyeing machines that can dye small amounts of clothing efficiently, thereby contributing to energy saving.</p> <p>Reduction of production energy (CO₂) through low temperature dyeing The amount of raw materials and energy used is reduced compared to conventional dyeing.</p> |

2. Recoloring (re-dyeing)

We provide recoloring for GAME DYE products starting with our own processed products to other companies' as well, regardless of composition (polyester, nylon, natural fibers).

*Some materials cannot be processed; please confirm with our sales staff.

Water repellency and antiviral processing can also be added

Unique dyeing technology for a vintage finish

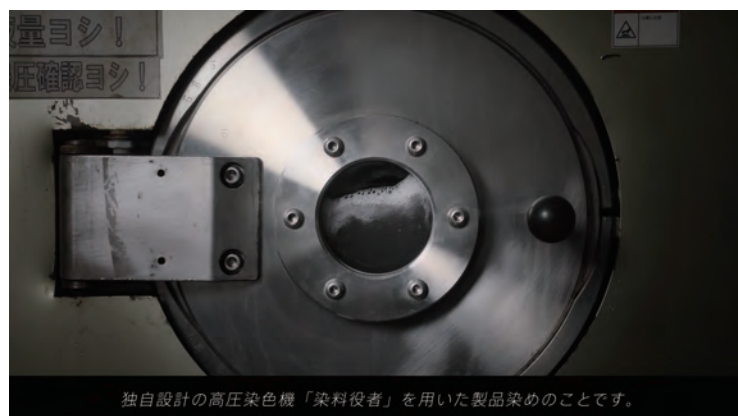


*If there is a possibility that accessories (buttons, fasteners, cords, etc.) may be damaged due to recoloring, we may ask clients to remove the accessories and reattach after recoloring.

*The recoloring color is either black or navy, and is specified by our company.

*Although we carefully manage the recoloring, the colors will not be 100% the same as the original.

[View the introduction video on YouTube](#)



Looking for business partners

New clients, product recycling companies, recoloring business, etc



KOMATSU MATERE Co.,Ltd. <https://www.komatsumatere.co.jp/>

■ Inquiry

| | |
|--------------------|---|
| Head Office | Nu 167 Hama-machi, Nomi-city, Ishikawa, 929-0124, Japan TEL : +81-761-55-1111 FAX : +81-761-55-8090 |
| Tokyo Sales Branch | Maruito Ginza No.3 Building 4th floor, 3-10-6 Ginza, Chuo-ward, Tokyo, 104-0061, Japan TEL : +81-3-3549-3880 FAX : +81-3-3549-3113 |
| Osaka Sales Branch | HERBIS ENT Office Tower 8th floor, 2-2-22 Umeda, Kita-ward Osaka-city, Osaka, 530-0001, Japan TEL : +81-6-6344-4161 FAX : +81-6-6344-4160 |



WEBSITE

